

THE GREENPRINT IN DETAIL

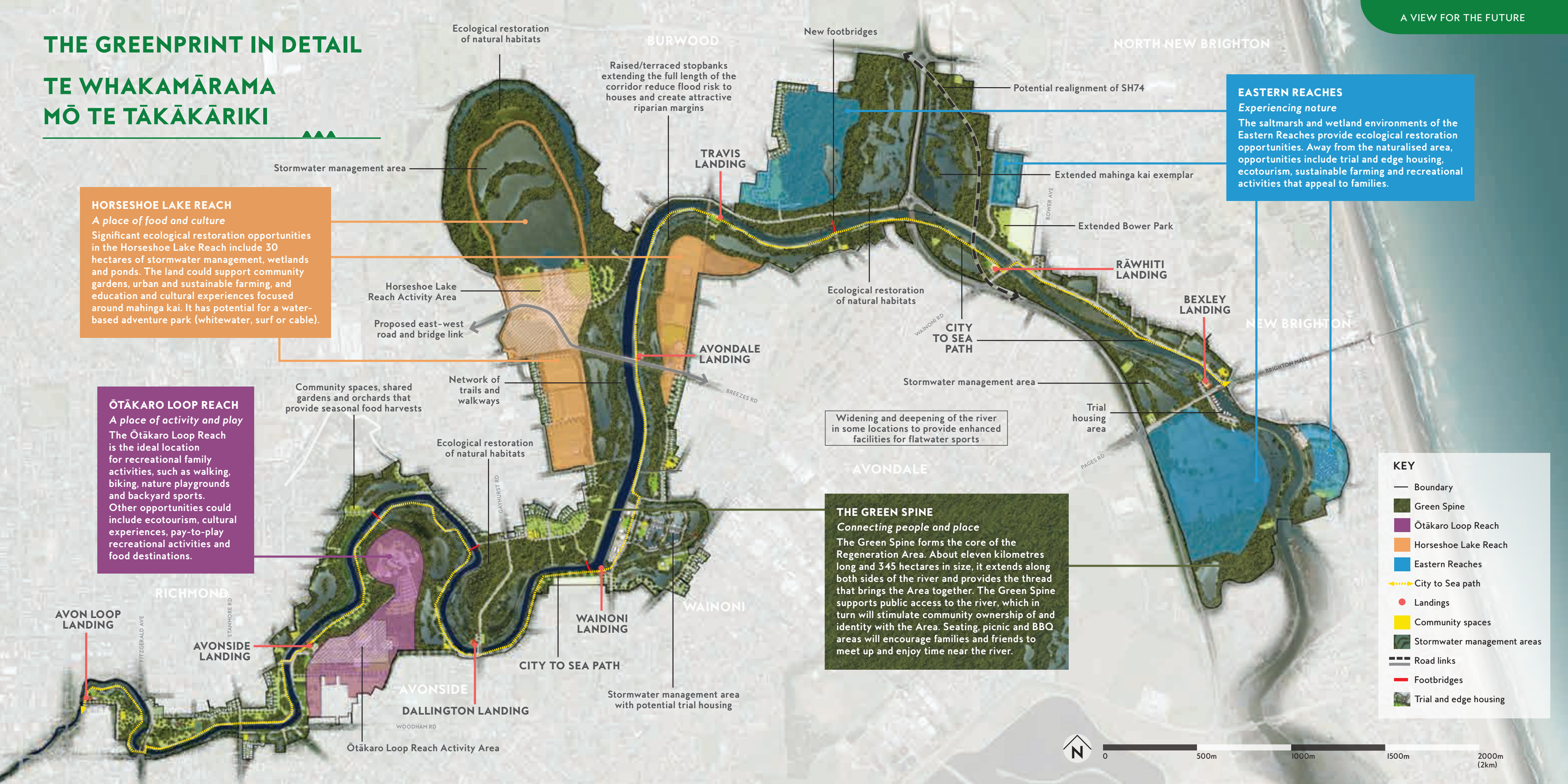
TE WHAKAMĀRAMA MŌ TE TĀKĀKĀRIKI

HORSESHOE LAKE REACH
A place of food and culture
Significant ecological restoration opportunities in the Horseshoe Lake Reach include 30 hectares of stormwater management, wetlands and ponds. The land could support community gardens, urban and sustainable farming, and education and cultural experiences focused around mahinga kai. It has potential for a water-based adventure park (whitewater, surf or cable).

ŌTĀKARO LOOP REACH
A place of activity and play
The Ōtākaro Loop Reach is the ideal location for recreational family activities, such as walking, biking, nature playgrounds and backyard sports. Other opportunities could include ecotourism, cultural experiences, pay-to-play recreational activities and food destinations.

EASTERN REACHES
Experiencing nature
The saltmarsh and wetland environments of the Eastern Reaches provide ecological restoration opportunities. Away from the naturalised area, opportunities include trial and edge housing, ecotourism, sustainable farming and recreational activities that appeal to families.

THE GREEN SPINE
Connecting people and place
The Green Spine forms the core of the Regeneration Area. About eleven kilometres long and 345 hectares in size, it extends along both sides of the river and provides the thread that brings the Area together. The Green Spine supports public access to the river, which in turn will stimulate community ownership of and identity with the Area. Seating, picnic and BBQ areas will encourage families and friends to meet up and enjoy time near the river.



KEY

- Boundary
- Green Spine
- Ōtākaro Loop Reach
- Horseshoe Lake Reach
- Eastern Reaches
- City to Sea path
- Landings
- Community spaces
- Stormwater management areas
- Road links
- Footbridges
- Trial and edge housing

