

Ko e, ha tautolu a faahi Malolo Tino mo e tau Malolo Tino kua nakai katoatoa

**Talagaaga he faahi Malolo Tino mo e
tau Malolo Tino kua nakai katoatoa
ke moua e tau fakaholoaga kua lata
ma e tau tagata Niu Silani**

Apelila 2021

Ko e ha tautolu a faahi Malolo Tino kua lagomatai lahi ki ai e tau tagata gahua fakamakamaka ka kua hagahaga-kelea mo e kua lauia ke he falu a lekua kua lata ke moua e tau levekiaga mitaki.

Ko e tau 2018, ne fakaata he Fakatufono e faahi Malolo Tino mo e faahi Malolo Tino ha lautolu kua nakai katoatoa ke liu kitekite ke he tau puhala gahua po ke faka-foou fefe ke lata mo e maveheaga. Ko e, pepa nai kua talahau ai e tali he Fakatufono ke he tau kumikumiaga ia mo e tau fakamaamaaga ko e fakamalolo fefe e faahi Malolo Tino ha tautolu ke moua he tau tagata Niu Silani e tau levekiaga kua hako mo e kua lata-tonu ki ai.

Ko e ha, ne liu fakafoou ai e faahi Malolo Tino ha tautolu?

Kua, maama lahi e fakafoouaga nai ha Niu Silani, hagaa ke he faahi Malolo Tino. Pete, ni kua holo mitaki e tau gahua he faahi Malolo Tino mo e tau Malolo Tino nakai katoatoa kua kitia ki ai, haha iai e falu a mena kua nakai holo-tatai ke he tau levekiaga mo e tufatufaaga he tau gahua.

Hakua, mafiti e momotua he tau momoui tagata, kua mafiti foki e tau gagao ke moua mo e lahi e manako ke he fakaaogaaga he tau lagomatai malolo tino ke he 10 e tautau ne toe mai mua. Haha iai e kitiaaga ke he faahi Malolo Tino ha tautolu kua taufetului mo e tau manako, he magaaho nai, mena ia kua lata ke moua taha o moi-aga ke tumau a Niu Silani he fenoga ki mua.. Ko e tau fakafoouaga nai kua hagaa ia ke he tau paleko mai mo e moua he faahi Malolo Tino ke kautu ke he tau vaha i mua.

To, fefe ki a e kitiaaga ke he Fakafoouaga nai?

Ko e hagaaoga ha mautolu ke fakamalolo e faahi Malolo Tino ha tautolu ke taha **ni e faahi Lagomatai Malolo Tino** kua lata ke foaki e tau lagomataiaga ma e tau tagata oti, mua-atu ke he tau matakau kua fita he lagomatai atu ki ai fakamua.

Ke, lata mo e tau fakaholoaga Malolo Tino anoiha, ka e nakai toka ke he "postcode lottery" ke talahau e levekiaga ma e tau tagata, to, fai puhala a mautolu ke he mouaga he tau lagomataiaga faka-falegagao mo e tau levekiaga faka-maaga. To fakaholo mo e faka-tolo-maki ki mua e tau levekiaga ke kitia ko e tau lagomataiaga ne moua e koe kua kitia mai ai e tau manako he maaga haau.

Ke maeke e tau mena nai ma e anoiha, kua lata ke iloa e tau fakatokatokaaga kua fakafetui lahi e fakatufono mo e tau maaga mo e fetataaki e tau vahaloto. Ke, moua e tau mena ia to, maeke ia tautolu ke:

- **Iu kikite e tuaga he Minisituli he faahi Malolo Tino** ko e takitaki he lahi he faahi Malolo Tino mo e takitaki Fakatonutonu ke he fakatufono ke he tau mena kua lata mo e faahi Malolo Tino
- **talaga taha matakau foou, Faahi Malolo Tino NZ** ke takitaki e fanoaga he faahi Malolo Tino ma e tau aho takitaha ke lata **mo e tau District Health Board oti.**
- **talaga taha Faahi Malolo Tino foou, ma e tau Maori** ke kitia kua foaki e tau lagomataiaga kua hako ma e tau tagata Maori mo e fakahako ni ke he tau mena kua manako e tau tagata Maori oti ki ai.
- **talaga taha Matakau Faahi Malolo Tino ma e tau tagata oti** i lalo hifo he Minisituli he faahi Malolo Tino ke fakamalolo-aki **e Faahi Malolo Tino lahi, NZ** ke kitia kua mau amaamanaki a tautolu ke tali-atu kaeke kua hoko mai e tau gagao lalahi.

Folafolaaga

Ononoaga ma e anoiha	4
Ko e maamanaki atu ke he fakafoouaga	5
Tau hikihiagiaga he tau fakatokatokaaga	6
Hauora Maori	8
Levekiaga ke he tau maaga	9
Falegagao mo e tau levekiaga mahuiaga	10
Faahi Malolo Tino ma e tau tagata oti	11
Tau hikiaga he tau fakaholoaga	12

Onoonaga ma e anoiha

Ko e faahi Malolo Tino ha Niu Silani kua mahuiga lahi, ke he fakaholoaga he tau momoui malolo tino, tau momoui olaola mo e tupuaga he tau monuina tupe. Kua haha ia tautolu e talahauaga tonu ke kitia kua gahua mo e fakamooli e tau tagata Niu Silani ma lautolu ne nakai moua e tau lagomatai ke he vaha fakamua.

Ko e onoonaga ha tautolu ke kautu e pae ora | faahi Malolo Tino ma e tau tagata Niu Silani oti anoiha.

Ko e faahi Malolo Tino kua kautu pae ora kua lata ke onoono atu ke he tau puhala ke fakagahua-aki:

- **tau monuina** lali ke moumou e vahaloto he tau tagata muhu koloa, he tau tagata Niu Silani, mua-atu ke he tau Maori, tau tagata Pasifika, tau tagata kua nakai katoatoa e tau Malolo Tino mo lautolu kua momoui lololole
- **fakafetuiaga** mo e tau Maori ke he ha lautolu a levekiaga malolo tino mo e fakagahua fefe, fakamalolo fefe-aki e tau tagata ke lagomatai ke talaga taha puhala kua lata tonu mo lautolu ni
- **fakatumauaga** puipui mo e taofi e tau manako malolo tino ka e aua neke onoono ni ke he tau gagao mo e lali ke fakatolomaki mo e mafiti e tau puhala lagomatai
- **levekiaga faka-mahino ke he tagata mo e tau magafaoa** hakoe, fakamaloloaga haia ma e tau tagata oti, ke mailoga haana a malolo mo e moui olaola ke he tino, mo e foaki ke he falu a tagata, tau tagata leveki mo e tau magafaoa e kakano mooli he leveki
- **mahuiga lahi** e fakatumauaga, levekiaga talahaua, lagomatai mai he takitaki, tau puhala foou mo e tau tekenoloti foou ke fakatumau-aki e fakaholo ki mua he tau lagomatai.

Ke he fakagahuaga, kua kitia e mena nai ko e taha puhala, kua:

- kitia ai ko e, faahi Malolo Tino ha tautolu kua liu fakamou mai e Te Tiriti o Waitnaga, tau fakaveaga mo e tau fakamatapatuaga mo e tau rangatira ke he talagaaga gahua ma e tau Maori ke maeke he tau tagata Maori ke moua e tau levekiaga kua lata mo lautolu ni
- maeke he tau tagata oti ke moua e tau lagomataiaga kehekehe ke nonofo mo e malolo ke he tau maaga, mo e tau lagomatiaga kua talaga ke putoia ai e tau manako he tau tagata ke moua e tau levekiaga kua mua-atu e mitaki
- ko e tau lagomataiaga mafiti mo e tau levekiaga kehekehe kua tumau ia ke moua mai he national network ke kitia e mahuiga he tau levekiaga, ka e nakai fakatatai atu ni, ke he mena kua nofo ai a koe
- ko e tau lagomataiaga faka -tititolo kua mua-atu e moua mafiti ma e tau levekiaga tata-atu ke he kaina mo e mahani mau ki ai
- ko e tau tagata gahua Malolo Tino mo e tau Tagata Leveki kua talahaua lahi, ke he ha lautolu a tau fekafekauaga mo e tau lagomataiaga kua fetufatufaaki mo e falu he tau Matakau Malolo Tino.

Kua, tata lahi mai anoiha, kakua lata ke moua e tau hikihihiaga ma e tau puhala kua fakafakagahua aki e faahi Malolo Tino ha tautolu.

Ko e puhala ke he fakafoouaga

Ko e tau tagata gahua ke he tau falegagao, tau Ekekafo, tau tagata tala-vai, tau tagata gagao, tau Maori mo e tau tagata Pasifika, tau leveki kaina, kua talahau ai ko e tau tagata kua mua-atu e gahua malolo mo e kua tuku-atu oti e tau momoui gahua ka e nakai haha iai ha lagomataiaga lahi ke he tau fakatokatokaaga he faahi Malolo Tino. Haha iai loga e tau fakatai ke he tau fakafoouaga mo e tau puhala gahua ka e, nakai fai faka-tau-tonu-aga mo e mailogaaga ma e ha lautolu a tau fakamakamaka ke he gahua.

Ko e, mena ia kua kamata tuai e fakatufono, ke fakafoou e tau matakau ne kua lagomatai mo e fakaaoga e tau puhala he faahi Malolo Tino, lauia ai e Minisituli he Faahi Malolo Tino mo e tau District Health Boards.

Kaeke, ko e ononoaga ha tautolu ke fakaholo ki mua e mitaki, mo e fakatumauga he tau leveki kua foaki, kua lata ke kamata ke he fakamaloloaga he tau puhala gahua,tau fakatokatokaaga he tau matakau kua leveki atu ki ai.

Ko e, tau fakaholoaga Malolo Tino kua mua-atu e uka mo e vihu monakai mukamuka ke leveki atu ki ai. 58. Kua mua-atu e uka mo e vihu ke he tama kautu tote e puke tagata, tote e tupe moua mo e nakai lahi e tau monuina mai he kelekele (natural resources). Ko e, fakaotiaga, to mua-atu e uka ke he tau manako, ke he foakiaga he tau leveki ma e tau tagata oti.

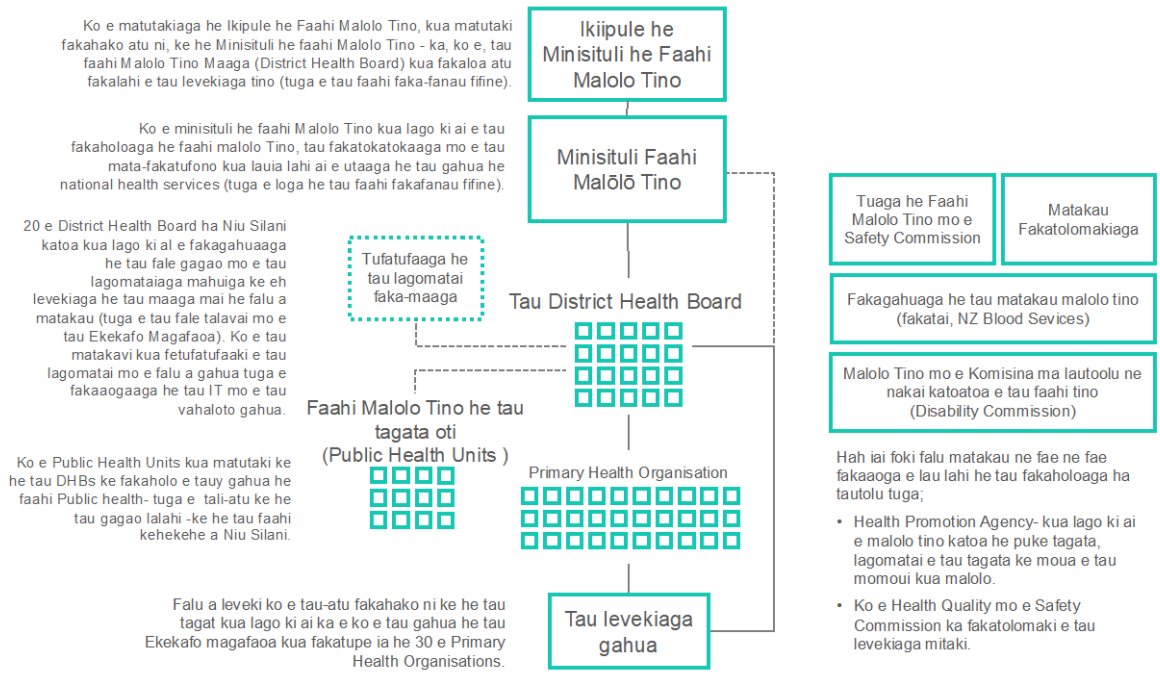
To, hoko mai e magaaho, to manako a tautolu ke moua e tau lagomataiaga kua mitaki,ke fakamaloloaki e faahi Malolo Tino ha tautolu, mo e fakaholo-ki-mua-aki, e fakatumauga he tau gahua kua lauia ai e tau tagata ke he ha lautolu a tau levekiaga. Pe he e kakano, ko e tau mena tuga, e gahua auloa ke fakamukamuka-aki e tau puhala liu talaga e tau lagomataiaga ke lata-tonu mo e tau manako he tau maaga mo e foaki atu ke he tau pulotu Malolo Tino e tau lagomatai kua lata, ke gahua mo e fekafekau ke he tau puhala mitaki lahi.

Ko e, kakano foki ke moua e lautolu kua gahua fano ke he faahi Malolo Tino e tokologa he tau pulotu malolo tino hauora, fakatokatokaaga tititolo, tau talahauaga kua lata mo e tau fakaaogaaga he tau koloa kua laui tonu ma e faahi Malolo Tino anoiha.

Ko e, tau hikihihiaga nai to hoko mai ke he taha magaaho, to matutaki a tautolu ke tutala ki ai ke he tau maaga mo e tau pulotu Malolo Tino ke he tau mahina haha i mua. Ka e, fakamua to hoko mai e tau hikihihiaga leveki kua gahuahua mitaki, kua lata ke moua taha fakatokatokaaga mitaki ma e faahi Malolo Tino ke lagomatai fakalahi atu ki a lautolu e tau tagata gahua kua matamua.

Hikiaga he tau fakatokatokaaga

Ko e faahi Malolo Tino ha tautolu kua hagahaga-kelea, hakua lauia ai e loga he tau matakau kehekehe kua igatia ni mo e ha lautolu a tau tutu-aga mo e tau fakafetuiaga. Ke he tu-aga tokoluga ko e faahi Malolo Tino ha tautolu kua gahua ai pe he nai:

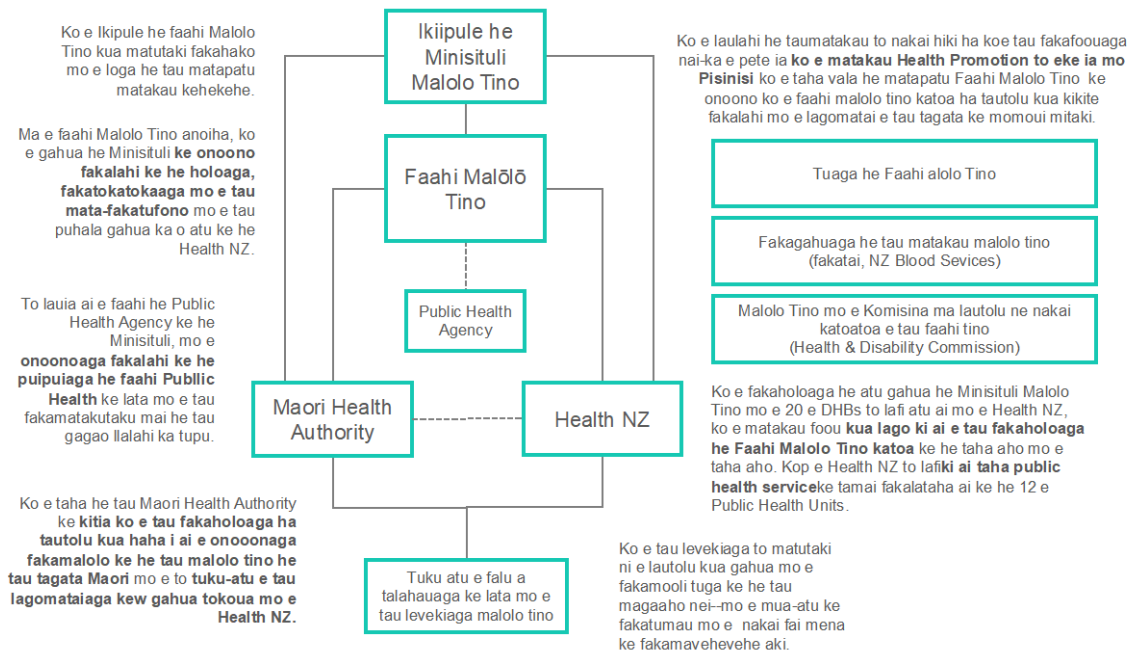


Kua, fakakite mai pe he nai e tau fakaholoaga ha tautolu:

- nakai tatai e tau foakiaga he tau monuina ma e tau Maori, tau maaga Pasifika, tau tagata, kua nakai katoatoa e tau malolo tino mo e falu foki
- gahoa lahi e tau palana auloa ke moua e tau talahauaga fakahiku kua lata ke taute ki ai, ke lauia ai e puke-tagata tokoluga, ke aua neke liu ke fatiaki ke he loga he tau magaaho
- tokolalo e kitiaaga ke he tau puhala tatanaki ke he levekiaga ki loto ke he tau maaga, ke lagomataiaki e tau tagata ka nonofo mai ki tua he tau falegagao
- ko e "postcode lottery" haana a kakano, ko e tau levekiaga ne moua e koe to, uta ni ke he nofoaga haau mo e Faahi Malolo Tino fe, po ke DHB fe, kua leveki atu ki a koe.

Ko e, tau fakatokatokaaga mo e tau matakau kehekehe kua moua ia mai he tau fakafoouaga nai ke fakamukamuka-aki e tau lekua fa moua mau- mo e talaga taha puhala ke fakatumau e mouaaga he tau puhala monuina ma e tau tagata oti.

Hakoe, fanoaga he faahi malolo tino he magaaho nai, kua uka mo e vihu, ko e faahi Malolo Tino ma e anoia to kitia ai pe he nai:



To, mukamuka e fanoaga to, mama foki mo e moua ai e tau matutakiaga ke he fakatumauaga he tau puhala leveki. To, tau-atu ke he tau paleko mai he magaaho nai, ke he loga he tau hikihikiaga:

- Talagaaga he tau matakau foou, Malolo Tino NZ (Health NZ) ke fakagahua mo e onoono ke he fanoaga he faahi Malolo Tino, ke he tau aho takitaha. Mai, he 20 DHB, liga 30 Matakau PHO mo e falu a tagata gahua, kua lata ni mo e taha e Faahi Malolo Tino ha Niu Silani, ke kitia kua mukamuka mo e fakatumau e nofoaga tokoluga he tau levekiaga.
- Ko e Health NZ, ka talaga taha palana mo e tuku-atu ke he Komisina he Faahi Malolo Tino (Commission Health Services) ke lata mo e tau tagata oti. To, taute ai ke he 4 e vahega ofisa kehekehe mai he tau (Population Health and Wellbeing Network he tau tokaaga he tau DHB) ke maeke he tau fakaotiaga fekau, ke taute tata atu ki a lautolu kua nonofo ai.
- To, 2 e lagoaga he Faahi Malolo Tino he tau Maori: to lagomatai atu ke he Minisituli ke fuafua e tau puhala gahua mo e tau fakatokatokaaga ke kitia kua gahua mitaki ma e tau Maori mo e gahua auloa ai mo e Health NZ ke kitia kua fakamooli e manako he tau maaga Maori kua laua ai ke he tau puhala foaki kua talaga pauai ma lautolu.
- Ko e, Minisituli he faahi Malolo Tino to maeke ke liu onoono atu ke he faahi Malolo Tino mo e foaki atu ai falu a hataki ke he Ikipule he faahi Malolo Tino haggao kehe tau mata-fakatufono kakano ke moua e taha maamaaga mitaki ke fakatumau e tau holoaga mitaki he faahi Malolo Tino katoatoa ha Niu Silani.
- Ko e, Minisituli ka tali e faahi Public Health Agency foou, ke he foakiaga he tau Takitaki he faahi Malolo Tino Auloa, ke he tau puhala mo e tau lotomatala, ka koe Public Health Unit ka tamai fakalataha ke auloa mo e faahi Malolo Tino Auloa i Niu Silani. Ko e, mena nai ke kitia ai e Faahi Malolo Tino Auloa ha tautolu, kua mauokafua mo e mautali ke tali-atu ke he tau fakamatakutaku mo e tau lekua tuga e COVID-19.
- Ke, fakatumau e onoonaaga ke he tau tagata kua leva e malolo, to, toka ai ke he tau loto e faahi Malolo Tino ha tautolu e Health Promotion Agency ka lafai fakalataha atu ke he Health NZ.

Hauora Maori

Ke he, 10 e tau-tau kua mole ko e faahi Malolo Tino ha tautolu kua loleole lahi ke lagomatai atu ke he tau Maori. Mua atu e matematekele he tau Maori, hakua tokologa ne mamate, fakatatai-atu ke he puke tagata Niu Silani, ne kua totou tokolalo e kitiaaga he leva he tau tau momoui mo e nakai moua e tau levekaiaga mitaki. Ko e, tau puhala nakai fe-tataiaki nai, kua nakai lata ke fakatumau ki ai. Ke, kitia kua nakai fakatumau mo e iloa ai foki e logonaaga he fakatufono ki lalo hifo he Te Tiriti o Waitangi, ko e faahi Malolo Tino ha tautolu kua lata ke moua e tau lagomatai Hauora Maori ke he tau puhala kehekehe.

Ko e, tau fakafoouaga nai, kua onoono lahi ke he fakamaloloaga he Rangatiratanga Maori i luga he hauora Maori, ke fakamalolo-aki e tau Maori ke fuafua mo e fakahagahaga mitaki e tau levekiaga, maitua ke he Te Tiriti o Waitangi.

Tauteaga he tau mata-gahau tuga e huki fulu, kua tamata he tau Maori ke he tau 2020 mo e kitia aikua gahuahua mitaki hakoe takitakiaga he tau Maori. Ko e, tau fakafoouaga nai to talaga ia ke he tau mena kua fakaako mai ai he tau kautuaga gahua.

Ke, faka-kautu-aki e leo he tau Maori ke he faahi Malolo Tino, ko e faahi Malolo Tuino anoiha to kitia ia e:

- **Ko e, Maori Health Authority mo e malolo kua haha iai** to gahua fakalataha mo e Minisituli he Faahi Malolo Tino ke he tau fakatokatokaaga mo e tau matafakatufono mo e Health NZ ke talaga e tau levekiaga mitaki ke lata ia mo e tau momoui he tau Maori mo e falu tagata Niu Silani - lauia ai e fakatupeaga fakahako ma e levekiaga he kaupapa mo e te ao Maori.
- **Fakamaloloaga he Iwi - Maori Partnership Board** ke gahua mo e fakaohoohe ke he tau fakaotiaga manatu ma e tai Iwi mo e tau Maori ke he tau maag takitaha, ke maeke he tau fakafetuaiaga he Te Tiriti ke gahuahua ke he tau fakapapahiaga oti he faahi malolo tino.
- Ke, moua e amaamanakiaga malolo mai he tau faahi malolo tino mo lautolu ne foaki e tau lagomatai leveki, ke foaki fakamitaki e tau levekiaga ma e tau Maori mo e falu ne kua nakai katoatoa e tau malolo tino ne nakai moua ha levekiaga ki ai fakamua.

Kakano, he tau mena ia, ko e faahi Malolo Tino ha tautolu anoiha to moua ai loga he tatanakiaga monuina mo e tau tau mitaki, ma e tau Maori mo e fakaholo ai ki mua foki, e tau tutuaga he tau Iwi mo e tau Maori ke he fuafuaaga he tau lagomatai kua talaga pauaki ma etau maaga Maori.

Lalafi atu ki ai, ko e tau matakau lagomatai mo e foaki he tau Maori kua fakaata a tautolu ke fakaholo ki mua e tau Kaupapa Maori kehekehe mo e falu matakau Maori kua fakatonu ni kia lautolu e faahi Malolo Tino, kua maeke ke fakaholo ki mua hokoaga ke he tau maaga Maori, e tau lagomataiaga kehekehe kua haha iai ke faka-tolo-maki-aki e tau talahauaga fakahiku Malolo Tino ma e tau tagata Maori mo lautolu nakai ko e tau tagata Maori. To, foaki atu foki, e tau fakatokatokaaga foou, ke kitia ko e tau lagomataiaga oti kua lata ia mo e tau maaga kua haha iai e tokologa he puke tagata kehekehe ke he tau maaga, nakai ni ki a lauutolu kua mukamuka ke moua e tau puhala leveki malolo tino.

Tau Uluaki leveki mo e tau levekiaga maaga

Tokologa he tau tagata Niu Silani ne matutaki lahi mo e faahi Malolo Tino ke he Uluaki Leveki mo e tau levekiaga maaga. Kua, lauia ai a lautolu ne gahua ke he tau maaga, tau fale talavai, tau Maori mo e tau maaga Pasifika, tau matakau he tau tagata kua momotua, tau mamatua fifine fakafanau, (midwives) Community Mental Health, tau tagata mulu, tau tagata taute nifo mo e falu foki ne lagomatai ke tului a koe mo e leveki a koe ke malolo ke he kaina mo e maaga haau.

Ke, fakamama-aki e kavega he faahi Malolo Tino ha tautolu, kua lata ke moua taha puhala ke taofiaki e tau malolo he tau tagata ke leva mo e moua e tau levekiaga tata ke he tau mena kua nonofo ai a lautolu.

Ke he tau magaaho nai kua mukamuka lahi ke fano kehe e ononoaga mai he tau levekiaga faka-maaga ka e ono-lahi ke he falegagao mo e falu a levekiaga pauaki pete ni, kua iloa e tautolu e mitaki mo e mukamuka he tau levekiaga uluaki ke taofiaki e tau malolo he tau tagata ke leva mo e nakai moua ke he tau gagao kua hagamaga-kelea.

Ke, lata mo e faahi Malolo Tino anoiha, ko e maaga haau to moua taha po ke molea atu **e taha matakau network** leveki mo e foaki, (healthcare providers) ke he maaga haau. Ko e, mena nai to lauia ai e tau tagata tuga e tau Ekekafo maaga, tau leveki fifine fanau, tau Nosi maaga mo e tau Ekekafo pu-mata, kakoe tau levekiaga ne foaki e lautolu kua holo mitaki mo e mukamuka. To, liga kitia ai pe he nai:

- pipi mau e tau matutakiaga he tau vahaloto he tau matakau foaki, ke maeke he tau puhala leveki ke mumuitua ke he tau tagata gagao mo lautolu ne lagomatai atu kia ai
- ke mua-atu, ko e fakaaogaaga he tau lakau hila (digital technology) kua maeke ke moua e tau levekiaga tata ke he tau kaina nonofo mo e utaaga faka-tagata ke he levekiaga malolo tino
- mua-atu e tau lagomataiaga faka-maaga, ke moua e tau manako he komuniti tuga, e kitiaga he tau lagomataiaga kaupapa Maori, kua haha i ai, mo e tau fakatupeaga he tau fakatutalaaga mo e tau Ekekafo magafaoa po ke tau aponimene kua fakatumau mo lautolu e tau faahi gahua foaki.

Ko e, tau lagomataiaga nai to fuafua ia he tau matakau ne ua, ko e Health NZ mo e Maori Health Authority ke kitia kua lata-tonu mo e lauia ai tau mata-gahua kua lata mo e tau puke tagata kehekehe kua nonofo aui i Niu Siilani mo e tau maaga ha tautolu.

To, haha iai foki e tau hikihihiaga ma e tau uluaki leveki mo e tau leveki maaga- mua atu ke he tau lagomataiaga faka-Ekekafo, kua nakai liu ke fakatupe he faahi Primary Health Organisation (PHO). Kua, hafagi e puhala foou nai ma e tau komuniti kua manako ke fakamatutaki e tau utaaga he tau puhala leveki kua lata tonu mo e ha lautolu a tau manako.

Fale Gagao mo e tau levekiaga mahuiga

Ko e, fale gagao mo e tau lagomataiaga mahuiga nai, kua lata ni mo e faahi specialist medical facilities tuga e fale gagao mo e kiliniki he tau tagata gagao mo lautolu kua lalahi mo e tutu hahaga-kelea e tau gagao. Kua, lauia ai e tokologa ne nakai nonofo ke he tau uluaki leveki, mo e tau levekiaga faka-maaga, lauia ai e tau fale gagao mo e tau lagomataiga oti kua matutaki atu ki a lautolu mo e tau tagata gagao ki fafo he tau lagomataiaga mahuiga nai.

Ko e tuaga mitaki he falegagao mo e tau levekiaga mahuiga ka totou ki ai, kua kitia lahi e kehekeheaga ke he faahi Malolo Tino Niu Silani - kakua lata ke moua e faka-matutakiaga mo e fakatumauaga ke he tau mena kua moua e tautolu ke he magaaho nai.

Kua iloa e tautolu, ko e tau falegagao mo e tau levekiaga mahuiga ke he loga he tau matakavi a Niu Silan, kua nofo ki lalo ke he tau tupetupeaga mo e tau fakaatukehe. Ko e, laga-aga he tau tupetupeaga nai, hakoe tau falegagao mo e tau levekiaga mahuiga, kua nakai gahua aulao, kakua igatia ni e matakau mo e gahua fekehekeheaki e taha ke he taha. Kua uka e mena nai, ka kua nakai lata ke pihia:

- mailoga mitaki, kua fakatumau e tau levekiaga i Niu Silani katoa, ke maeke he tau levekiaga ne moua e koe, ke aua neke fakatatai atu, ke he mena ne nofo ai a koe
- foaki e levekiaga kua haha i ai e mukamuka mo e hahaga mitaki
- fakaaogaaga he tupe, he falu a magaaho, kua faka-toko-lalo-aki e kitiaaga ko e fiha ne toe ke fakatupe-aki e tau leveki ke he tau maaga.

Ke lata mo e faahi malolo tino anoiha, to fakaholo ki mua e tau palana ma e tau fale gagao mo e tau levekiaga mahuiga katoa, kua haha iai ke he tau **matakavi laulahi**. Ke lata mo e tau fakahikuaga manatu hahaga ke he tau levekiaga kua taute fakakehe mai he falu a matakavi, ko e tau fale gagao mo e tau levekiaga mahuiga kua lata ke fakatupe fakalahi ke kitia e kehekeheaga he tau levekiaga ma e tau tagata Niu Silani. Pe he nai e kitiaga ia:

- fakatumau e tau leveki ki Niu Silani katoa kakano, ko e tau maaga ikiiki mo e tau maag i tua, kua lata ke moua e tau puhala kehe mai he tau levekiaga kua tata-atu ke he tau nonofoaga (tuga e tau faahi gahua fakatepetepe mo e tau faahi faka-fanau tama), mo e fakamooli ki ai kua haha iai e tau levekiaga mahuiga kua lata ke moua
- fakamama hifo e tau fakaholoaga gahua kua vihu mo e mavehevehe ke he motu katoa, fakamama hifo e tau gahua he tau tagata gahua mo e fakaaoga e tau iloilo he tau tagata gagao ke holo-mitaki e tau gahua
- tote e fetoko ke he vahaloto he tau tagata gahua mo e fakaaogaaga he tau koloa mo e moua ai e fakatupeaga he tau tagata gahua.

Faahi Malolo Tino he tau Tagat oti

Ko e Faahi Malolo Tino ma e tau tagata oti ko e mouaga he tau magaaho ke kamata puipui e tau gagao ke he tau faga mena pe he nei:

- Malolo Tino he puke tagata- kua onono fakalahi ke he tau mena tuga e (ula-tapaka) ne fae faka-gagao-aki a tautolu
- puipuiaga ke he tau gagao, tuga ke o atu ke huki
- tali-atu ke he tau gagao lalahi mo e tau gagao kua hagahagakelea.

Kua kitia ke he COVID-19, kua mua-atu a tautolu ke he lalolagi, he totoko-atu ke he tau fakamatakutaku mai he Faahi Malolo Tino ma e Tau Tagata Oti, ka e mua-atu ni kaeke kua gahua auloa mo e kau fakalataha a tautolu ko e taha ni kautu.

Ko e 12 e mahin kua mole kua kitia ai ko e Faahi Malolo Tino ma e Tau Tagata Oti (Public Health System) kua gahua tumau mo e mumui tua ke he tau puhala leveki, kumikumi atu foki mo e matutaki lahi mo e tau maaga. Tau lotomatala ne takitaki-aki mo e tau Maori mo e tau maaga kua nonofo ai e tokologa he tau vahega tagata kehekehe, kua puipui mo e haohao mitaki ai a tautolu kua mua-atu ke he falu a kautu he lalolagi.

Ka ko e ha tautolu a tau kitiaga ke he COVID-19 kua haha iai e tau mena kua lolole ai- mua-atu ke he 12 e Faahi Malolo Tino ne kua lata ke moua e tau takitaki kua lotomatala ke tali-atu mafiti ka hohoko mai e tau matematekelea faka-lutu-kia.

Ko e faahi Malolo Tino ha tautolu anoiha, to moua ai e fakamaloloaga ke onono fakamahao ni, ke he Faahi Malolo Tino ma e Tau Tagata Oti ke he tau puhala leveki kehekehe, ke lafai atu, ke he tau faahi Malolo Tino mo e Moui Olaola he Tagata ke he kaina, gahuaga mo e Moui fiafia. Ua, e hikihihiaga lalahi kua fuafua ki ai po ke kitia fefe e faahi Malolo Tino ma e Tau Tagata Oti.

- To, taute ai he Minisituli he faahi Malolo Tino, taha tauteaga fouu **ma e taha Matakau Malolo Tino** kua lata ke leveki e utaaga he tau fakatufono mo e tau fakatokatokaaga he Faahi Malolo Tino ma e Tau Tagata Oti. To, lagomatai a tautolu ke fai lotomatala ke tali-atu ke he tau fakamatakutaku ke he faahi Malolo Tino ma e Tau Tagata Oti, mo e tuku ki ai e tau pulotu iloilo ke he uho e tauteaga he tau mata-fakatufono.
- To, lafi-atu **ke he Health NZ e national public health service** ke auloa fakalataha mo e PublicHealth Units, i lalo hifo he taha ni e matini. Pehe e mena ia, to hagahaga mitaki a tautolu ke fakamatutaki e tau levekiaga malolo tino mo e tali-tua-atu ke he tau fakamatakutaku, tuga e COVID-19, tau gagao misele mo e tau gagao ha ko e ula-tapaka.

Taha, vala ke he hikiaga nai, kua aoga lahi ke iloa e tau malolo tino he puke tagata auloa, kua lauia ai, e tau aga fakatagata, tau levekiaga ke he kaina mo e moui fiafia he tagata - ko e uho he tau matakau malolo tino haia. Ke, kitia kua tutupu e tau mena nai, ko e Health Promotion Agency ka lafi-atu ke he Health NZ ke kitia kua tumau e tau malolo mo e tau lotomatal ma e tau momoui malolo he puke tagata auloa. Ko e, fakamaloloaga nai kua haha iai ke he tau matakau nai ne ua, ko e Health NZ mo e Maori Health Authority ke kitia kua lagomatai, nonofo haohao mitaki mo e nonofo malolo e tau tagata oti a Niu Silani.

Ko e, Fakaholoaga kua Hiki

Ko e, tau fakailoaga nai, kua talahau ai e kamataaga he tau fakamaloloaga he Faahi Malolo Tino ha tautolu. Ko e, hikiaga ma e tau fakatokatokaaga gahua, to nakai haha iai e kitiaga mafiti po ke, ae fe, fe-fe mo e magaaho fe, ka moua ai e tau levekiaga nai mo e fakagahua fe-fe,, kaeke ko koe kua gahua ke he tau faahi Malolo Tino.

Ke he magaaho ku nei, ko e tau lagomatai ke lata mo lautolu e tau pulotu malolo tino mo lautolu ne gahua ki mua he tau laini, kua lata ke fakaholo ki mua e tau puhala leveki atu ki ai, ke maeke ke foaki atu kia lautolu e tau levekiaga kua mitaki mo e fakatumau ki ai. Ma e, faahi Malolo Tino anoiha, to tumau agaia ni ke moua e Ekekafo Magafaoa haau mo e Falegagao, ka ko e tau levekiaga ka moua e koe to kitia ai ke he tau mena kua manako a koe ki ai, tuaga mo e kitiaaga he maaga haau mo e heigoa kua mukamuka kia koe mo e haau a kau-gahua malolo tino.

Haha iai, tolu e vala lalahi ke he hikiaga he fakaholoaga

- Falu a matafakatufono gahua mo e tau fakafoouaga
- Tau talahauaga mo e tau fakatino
- Fakagahuaaga mo e tau hikihikiaga.

Ko e, kamataaga he fakafoouaga nai, ko e kamataaga he fenoga loa mo e uka, ke fakaholo-aki ki mua e tau levekiaga mo e fakatumauaga he tau puhala gahua ke mailoga he tau tagata gahua kua matalahi mo e talahaua a lautolu.

Ha ha iai agaia ni e hikiaga ke he tau matafakatufono gahua ka fakatoka atu ai ke he tau magaaho i mua, ke lata mo e tau fakatupeaga, tau kau gahua mo e malolo tino faka-tititolo (digital health). Ko e, tau hikihikiaga nai kua hagaao atu ke he tau kakano mooli kua lata tonu mo e tau levekiaga.

Ke he magaaho nai to fakatumau ni e tau faahi malolo tino ke gahua mo koe--po ke gahua a koe ma e faahi malolo tino po ko koe taha he maaga laulahi-kua onono fakalahi ke he tau gahua he faahi malolo tino ha tautolu. To haha iai falu a magaaho ke he tau mata-kupu na kua fita he fakatutala i luga, ke kitia ai po ke fakagahua fefe ke foaki fakamitaki mo e fakatumau fefe ke moua e tau levekiaga kua mua he mitaki.

Ke fakaotiaki, haha iai e tau hikihikiaga kua lata ke fakagahua ke he magaaho nai, tuga e fakatuaga he Health NZ mo e Maori Health Authority foou mo e lagomatai atu ke he DHB mo e Minisitlu he Faahi Malolo Tino, ke mau amanaki ke lata mo e tau hikiaga he tau fakaholoaga ma e tau tagata gahua ke he Health NZ.

Ko e ha mautolu a matutakiaga ki a koe to, fakatumau ni ke fe-matutaki ke he tau puhala pe he nai ke fakamaloloaki e faahi Malolo Tino ha tautolu. Kaeke ke fai huhu, finatu ke he Transition Unit ne fakatokatoka e tau fakafoouaga nai.

Website: www.dpmc.govt.nz/our-business-units/transition-unit

Email: enquiries.tu@dpmc.govt.nz